

Meetings & Events Guide.

OMNI DALLAS HOTEL

EXPERIENCES MATTER HERE



OMNI
DALLAS

Table *of* Contents.

MEETINGS & EVENTS OVERVIEW	01
ABOUT.....	02
EVENT VENUES	04
HIGHLIGHTS	08



Right in the MIDDLE OF IT ALL.

Omni Dallas Hotel celebrates the vibrancy of the city, from its artistic culture to its tranquil pool deck and soothing treatments at Mokara Spa to create a memorable experience for every visitor. Each of our 1,001 guest rooms is finished in contemporary comfort, featuring creative works by local artists and expansive windows that highlight stunning city views.

Situated just 20 minutes from DFW International Airport, Omni Dallas Hotel is conveniently located for corporate events, conferences, weddings and exceptional celebrations. Connected to the Kay Bailey Hutchison Convention Center, attendees can easily travel back and forth via sky bridge. An expansive 110,000 square feet of flexible indoor/outdoor event space set the stage for an unforgettable gathering.



about Omni Dallas Hotel.

TEXAS HOSPITALITY AND CITY STYLE

At the premier urban hotel in downtown Dallas, you'll find an inviting home base for your city exploration. Lounge by the heated rooftop infinity pool, with skyline views beyond. Take a foodie tour through the eight connected dining concepts at Restaurants on Lamar. Schedule a relaxing massage or body scrub at Mokara Spa, a tranquil retreat at the heart of the city.





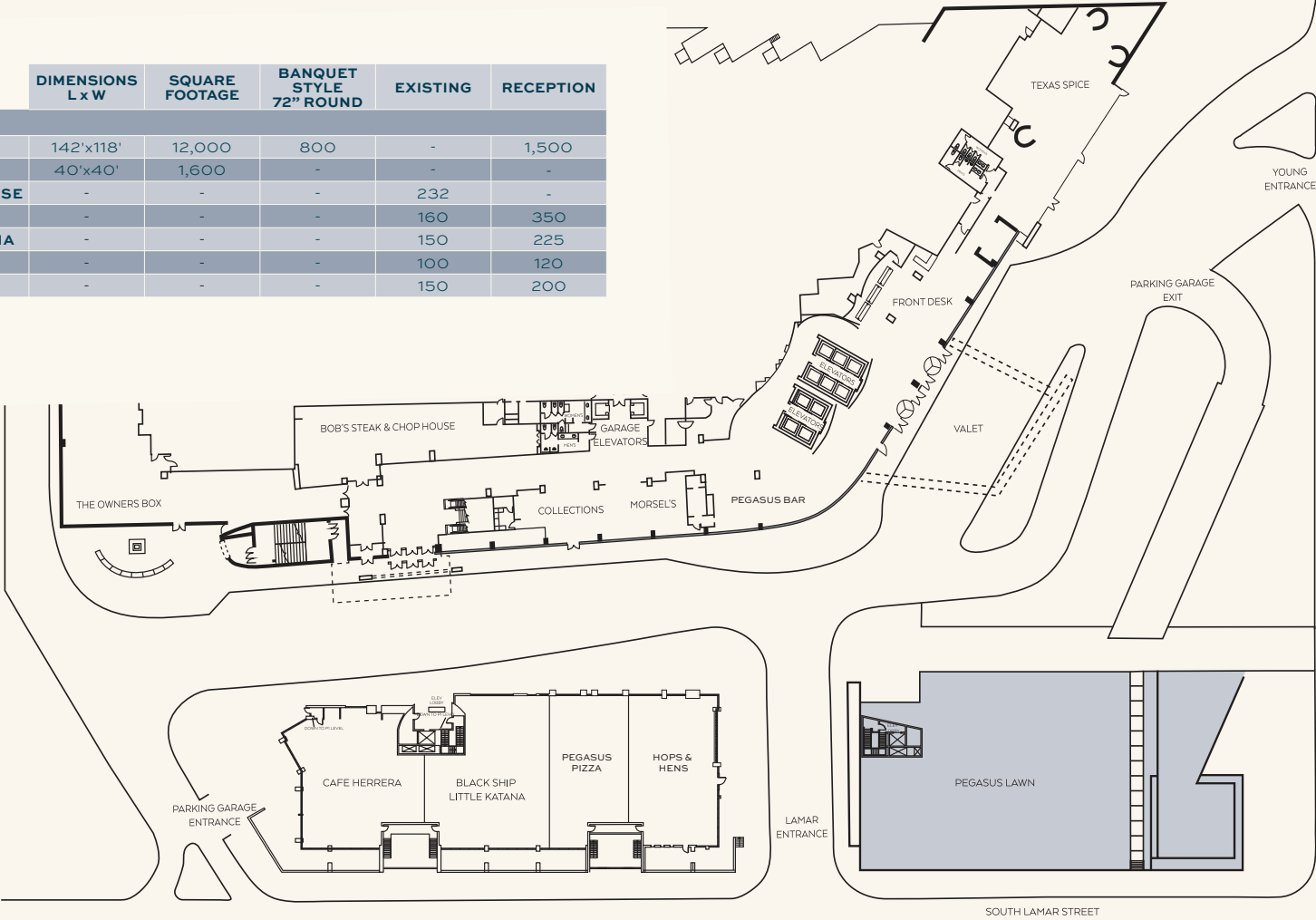
An event to remember.

- 1,001 **spacious guest rooms** featuring modern decor and works by local artists
- 67 **luxurious suites** including three presidential suites and 51 two-bedroom suites offering comfortable seating areas, floor-to-ceiling windows and sophisticated furnishings
- 110,000 square feet of flexible indoor and outdoor **meeting, event and pre-function space**, including the nearly 32,000 square foot Dallas Ballroom
- Restaurants on Lamar available for **private block parties** and **Pegasus Lawn** for events for up to 5,000 guests
- Fast Wi-Fi, the latest AV technology and helpful professional services provided by **Pinnacle Live**, our premium in-house AV partner
- Premium catering featuring **locally-sourced ingredients** whenever possible
- Uptown Terrace with **heated infinity pool** and views of downtown Dallas; enjoy signature cocktails and light bites at **Uptown Terrace Pool Bar & Grill**
- 10 **unique dining venues** including the Restaurants on Lamar, a one-of-a-kind food and drink experience featuring upscale Mexican at Café Herrera, Texas farm-to-table cuisine at Texas Spice, traditional Asian dishes with a modern American twist and much more
- Soothing body treatments and salon services at **Mokara Spa**
- Expansive state-of-the-art **fitness center**
- Professional shipping, receiving and printing services offered at **UPS Store Technology & Business Center**, conveniently located on the 2nd floor
- Walking distance to the **DART light rail** for easy transportation to DFW or Dallas Love Field from Union Station

Flexible Event & Meeting Space.

LEVEL ONE

	DIMENSIONS L x W	SQUARE FOOTAGE	BANQUET STYLE 72" ROUND	EXISTING	RECEPTION
LEVEL ONE					
PEGASUS LAWN	142'x118'	12,000	800	-	1,500
PEGASUS STAGE	40'x40'	1,600	-	-	-
BOB'S STEAK & CHOP HOUSE	-	-	-	232	-
CAFE HERRERA	-	-	-	160	350
BLACK SHIP LITTLE KATANA	-	-	-	150	225
PEGASUS PIZZA	-	-	-	100	120
HOPS & HENS	-	-	-	150	200

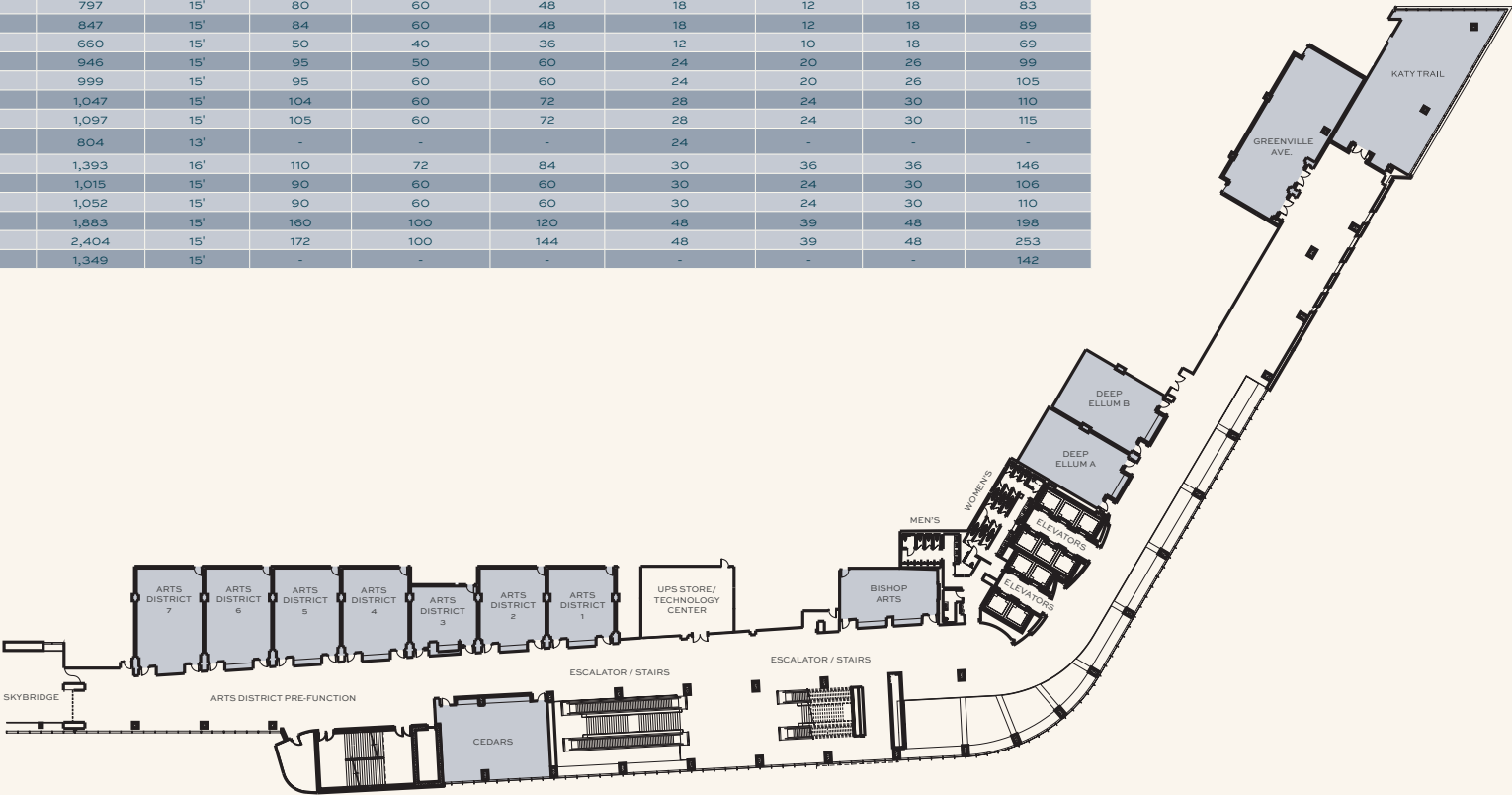


Meeting Room Capacities
Were Determined Using
72" Rounds Of 12 (Rounds
Capacity), Three Chairs Per
6'X30" Table (U-Shape
Capacity) And Three Chairs
Per 6'X18" Table (Classroom
Capacity)

Flexible Event & Meeting Space.

LEVEL TWO

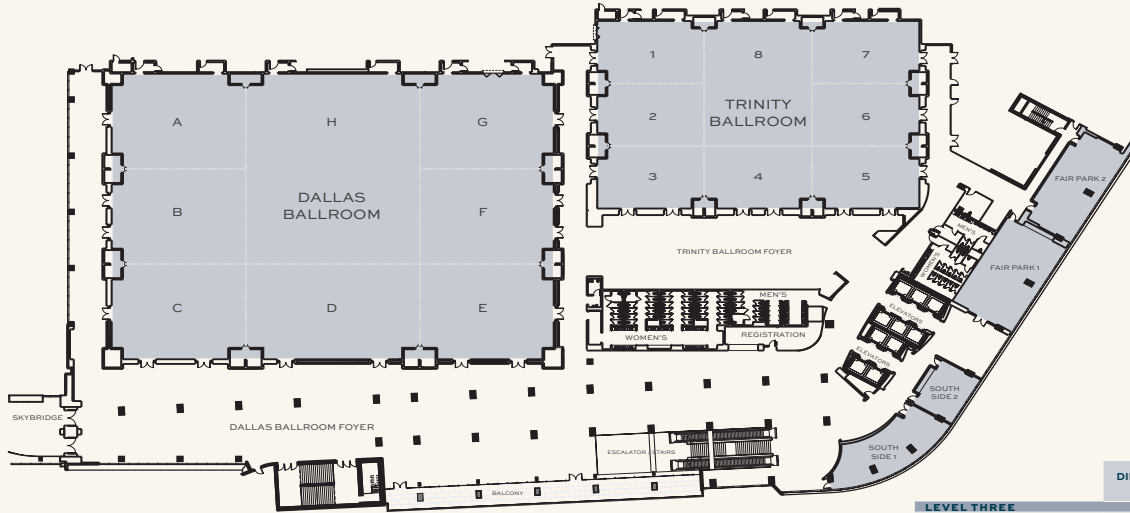
	DIMENSIONS LxW	SQUARE FOOTAGE	CEILING HEIGHT	THEATER	CLASSROOM 18" DESKS	BANQUET STYLE 72" ROUND	CONFERENCE STYLE	U-SHAPE	HOLLOW SQUARE	RECEPTION
LEVEL TWO										
2ND FLOOR SKYBRIDGE	153'x49'	4,837	-	-	-	-	-	-	-	250
ARTS DISTRICT FOYER	236'x557'	18,923	15'	-	-	-	-	-	-	-
ARTS DISTRICT 1	33'x27'	797	15'	80	60	48	18	12	18	83
ARTS DISTRICT 2	34'x27'	847	15'	84	60	48	18	12	18	89
ARTS DISTRICT 3	27'x27'	660	15'	50	40	36	12	10	18	69
ARTS DISTRICT 4	40'x27'	946	15'	95	50	60	24	20	26	99
ARTS DISTRICT 5	41'x27'	999	15'	95	60	60	24	20	26	105
ARTS DISTRICT 6	42'x27'	1,047	15'	104	60	72	28	24	30	110
ARTS DISTRICT 7	44'x27'	1,097	15'	105	60	72	28	24	30	115
BISHOP ARTS BOARDROOM	30'x19'	804	13'	-	-	-	24	-	-	-
CEDARS	30'x45'	1,393	16'	110	72	84	30	36	36	146
DEEP ELLUM A	43'x25'	1,015	15'	90	60	60	30	24	30	106
DEEP ELLUM B	42'x27'	1,052	15'	90	60	60	30	24	30	110
GREENVILLE AVENUE	29'x69'	1,883	15'	160	100	120	48	39	48	198
KATY TRAIL	81'x41'	2,404	15'	172	100	144	48	39	48	253
KATY TRAIL FOYER	52'x48'	1,349	15'	-	-	-	-	-	-	142



Meeting Room Capacities
Were Determined Using
72" Rounds Of 12 (Rounds
Capacity), Three Chairs Per
6'X30" Table (U-Shape
Capacity) And Three Chairs
Per 6'X18" Table (Classroom
Capacity)

Flexible Event & Meeting Space.

LEVEL THREE

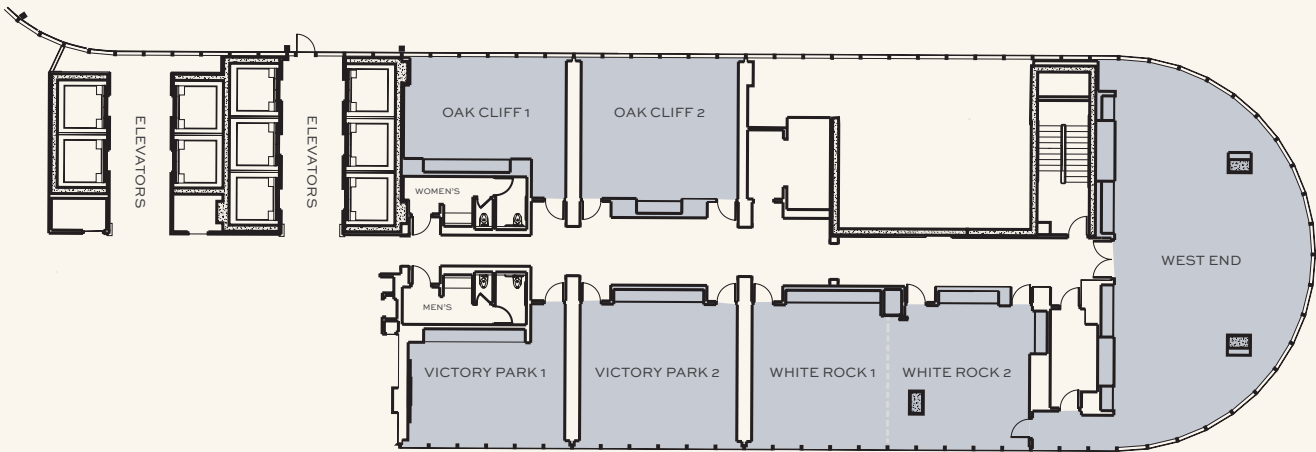


Meeting Room Capacities
Were Determined Using
72" Rounds Of 12 (Rounds
Capacity), Three Chairs Per
6'X30" Table (U-Shape
Capacity) And Three Chairs
Per 6'X18" Table (Classroom
Capacity)

	DIMENSIONS LxW	SQUARE FOOTAGE	CEILING HEIGHT	THEATER	CLASSROOM 18" DESKS	BANQUET STYLE 72" ROUND	CONFERENCE STYLE	U-SHAPE	HOLLOW SQUARE	RECEPTION
LEVEL THREE										
3RD FLOOR SKYBRIDGE	31'x72"	1,628	16.8'	-	-	-	-	-	-	-
DALLAS BALLROOM	218'x84'	30,204	28'	-	3,700	2,270	-	-	-	1,340
DALLAS FOYER	237'x370'	24,460	27'	-	-	-	-	-	-	2,570
DALLAS A	51'x64'	3,324	32'	300	140	192	50	50	70	330
DALLAS B	51'x64'	3,158	32'	320	160	240	50	50	70	330
DALLAS C	51'x64'	3,324	32'	320	160	240	50	50	70	330
DALLAS D	51'x66'	4,269	32'	420	260	336	60	60	80	450
DALLAS E	51'x66'	3,121	32'	320	160	240	50	50	70	330
DALLAS F	51'x64'	3,155	32'	320	160	240	50	50	70	330
DALLAS G	51'x66'	3,121	32'	300	140	192	50	50	70	330
DALLAS H	102'x86'	8,632	32'	940	400	672	-	-	-	910
DALLAS A,B	102'x64'	6,282	32'	650	360	360	-	-	-	660
DALLAS A,B,C	152'x64'	9,407	32'	900	500	520	-	-	-	990
DALLAS A,B,C,D,H	182'x100'	22,108	32'	2,600	1,300	1,300	-	-	-	2,380
DALLAS A,B,F,G,H	102'x214'	21,790	32'	2,480	1,480	1,580	-	-	-	2,230
DALLAS A,B,H	102'x150'	14,975	32'	1,600	1,000	980	-	-	-	1,970
DALLAS B,C	102'x64'	6,283	32'	680	320	360	-	-	-	660
DALLAS C,D	51'x150'	7,393	32'	670	350	420	-	-	-	780
DALLAS C,D,E	51'x214'	10,554	32'	980	500	600	-	-	-	1,110
DALLAS D,E	51'x150'	7,389	32'	740	350	330	-	-	-	780
DALLAS D,E,F,G,H	152'x150'	22,297	32'	2,520	1,400	1,380	-	-	-	2,350
DALLAS D,H	152'x86'	13,201	32'	1,440	840	850	-	-	-	1,360
DALLAS E,F	102'x64'	6,276	32'	620	340	360	-	-	-	660
DALLAS E,F,G	152'x64'	9,394	32'	940	500	520	-	-	-	990
DALLAS F,G	102'x64'	6,276	32'	650	340	360	-	-	-	660
DALLAS G,H	102'x100'	14,308	32'	1,600	1,000	1,040	-	-	-	1,510
FAIR PARK 1 FOYER	27'x33'	845	-	-	-	-	-	-	-	50
FAIR PARK 1	55'x33'	1,748	13'	120	80	108	40	30	40	180
FAIR PARK 2	27'x35'	1,435	13'	110	60	80	30	30	40	150
SOUTH SIDE 1	26'x66'	1,760	12'	45	24	60	16	14	16	100
SOUTH SIDE 2	27'x27'	605	12'	30	26	24	14	11	14	30
TRINITY BALLROOM	100'x54'	15,400	28'	1,420	860	820	-	-	-	1,560
TRINITY FOYER	144'x42'	5,053	12'	-	-	-	-	-	-	530
TRINITY 1	33'x52'	1,636	28'	168	80	108	40	40	50	170
TRINITY 2	34'x52'	1,649	28'	168	80	108	40	40	50	170
TRINITY 3	33'x52'	1,636	28'	168	80	108	40	40	50	170
TRINITY 4	33'x52'	1,644	28'	168	80	108	40	40	50	170
TRINITY 5	33'x52'	1,633	28'	168	80	108	40	40	50	170
TRINITY 6	33'x51'	1,619	28'	168	80	108	40	40	50	170
TRINITY 7	33'x51'	1,623	28'	168	80	108	40	40	50	170
TRINITY 8	67'x52'	3,383	28'	340	200	240	-	-	-	360
TRINITY 1,2	67'x52'	3,289	28'	350	190	180	70	60	70	340
TRINITY 1,2,3	100'x52'	4,904	28'	470	230	270	-	-	-	580
TRINITY 1,2,8	67'x102'	6,871	28'	760	460	460	-	-	-	700
TRINITY 1,2,3,4,8	100'x103'	9,848	28'	1,050	570	720	-	-	-	1,040
TRINITY 1,2,5,6,7,8	87'x154'	9,993	28'	1,130	680	820	-	-	-	1,040
TRINITY 1,3	67'x52'	3,284	28'	330	180	180	70	60	70	350
TRINITY 3,4	33'x103'	3,280	28'	280	180	160	70	60	70	350
TRINITY 3,4,5	33'x114'	4,424	28'	430	270	250	-	-	-	510
TRINITY 4,5	33'x102'	3,287	28'	270	160	160	70	60	70	340
TRINITY 4,8	100'x52'	5,027	28'	520	216	240	-	-	-	530
TRINITY 4,5,6,7,8	100'x150'	15,000	28'	1,250	570	570	-	-	-	1,040
TRINITY 5,6	66'x51'	3,332	28'	290	180	180	70	60	70	340
TRINITY 5,6,7	100'x51'	4,855	28'	490	230	270	-	-	-	510
TRINITY 6,7	67'x51'	3,242	28'	320	180	180	70	60	70	340
TRINITY 6,7,8	67'x102'	6,865	28'	700	420	420	-	-	-	700

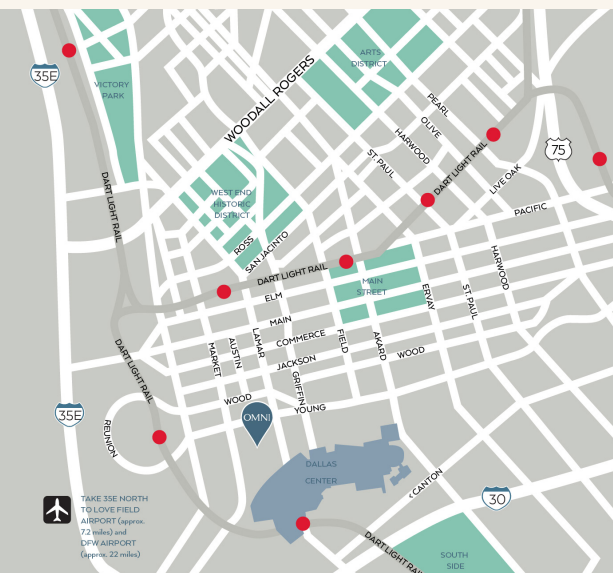
Flexible Event & Meeting Space.

LEVEL FIVE



	DIMENSIONS LxW	SQUARE FOOTAGE	CEILING HEIGHT	THEATER	CLASSROOM 18" DESKS	BANQUET STYLE 72" ROUND	CONFERENCE STYLE	U-SHAPE	HOLLOW SQUARE	RECEPTION
LEVEL FIVE										
OAK CLIFF 1	18'x26'	483	8.2'	30	20	24	20	12	15	30
OAK CLIFF 2	25'x26'	589	8.2'	40	30	48	20	12	15	30
VICTORY PARK 1 BOARDROOM	21'x26'	489	8.2'	-	-	-	14	-	-	-
VICTORY PARK 2	25'x26'	603	8.2'	40	30	48	20	12	15	30
WHITE ROCK 1	25'x22'	536	8.2'	30	18	24	12	12	18	20
WHITE ROCK 2	25'x26'	536	8.2'	25	12	24	12	9	12	20
WHITE ROCK	22'x48'	1,064	8.2'	70	36	36	20	20	30	50
WEST END	35'x62'	1,676	8.2'	80	40	72	36	30	36	170

Meeting Room Capacities
Were Determined Using
72" Rounds Of 12 (Rounds
Capacity), Three Chairs Per
6'X30" Table (U-Shape
Capacity) And Three Chairs
Per 6'X18" Table (Classroom
Capacity)



OMNI DALLAS HOTEL
555 S LAMAR
DALLAS, TEXAS 75202
214.744.6664
OMNIHOTELS.COM/DALLAS

Dallas

highlights.

Downtown Dallas buzzes with creative energy and local enthusiasm. Soak up the culture of the city, from the symphony and ballet, to the beloved Dallas Mavericks. Walk to the West End or Victory Park for lively nightlife and live music, or explore fascinating museums and beautiful outdoor parks. Come prepared to shop, with upscale retailers, charming boutiques and popular outlet stores across the city.

AIRPORTS

DFW International Airport | 27 min
 Love Field Airport | 20 min

ATTRACTIONS

AT&T Discovery District | 4 min
 Dallas Arboretum and Botanical Garden | 17 min
 Dallas Farmers Market | 5 min
 Dallas Holocaust and Human Rights Museum | 4 min
 Dallas Museum of Art | 7 min
 Dallas Zoo | 8 min
 Fair Park | 8 min
 Perot Museum of Nature and Science | 6 min
 West End Historic District | 4 min

SPORTS

American Airlines Center (home of the Dallas Mavericks and Dallas Stars) | 7 min
 AT&T Stadium (home of the Dallas Cowboys) | 24 min
 College Park Center (home of the Dallas Wings) | 30 min
 Cotton Bowl Stadium (home of the Dallas Trinity FC) | 10 min





OMNI DALLAS

[OMNIHOTELS.COM/DALLAS](https://omnihotels.com/dallas)
DALDTNLEADS@OMNIHOTELS.COM